

**STUDY FOR**

**SMALL COUNTRY/**

**LARGE SCULPTURE**



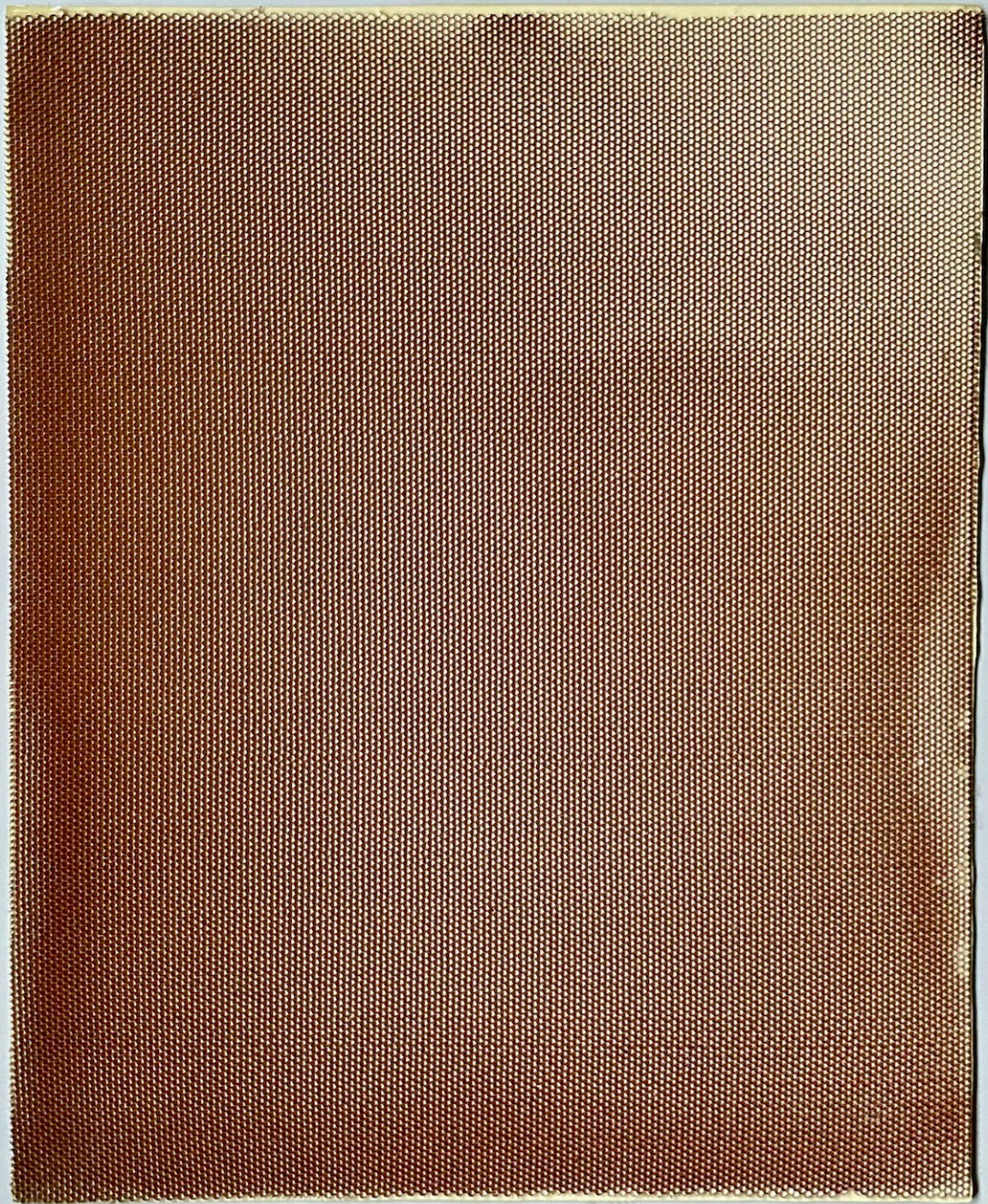




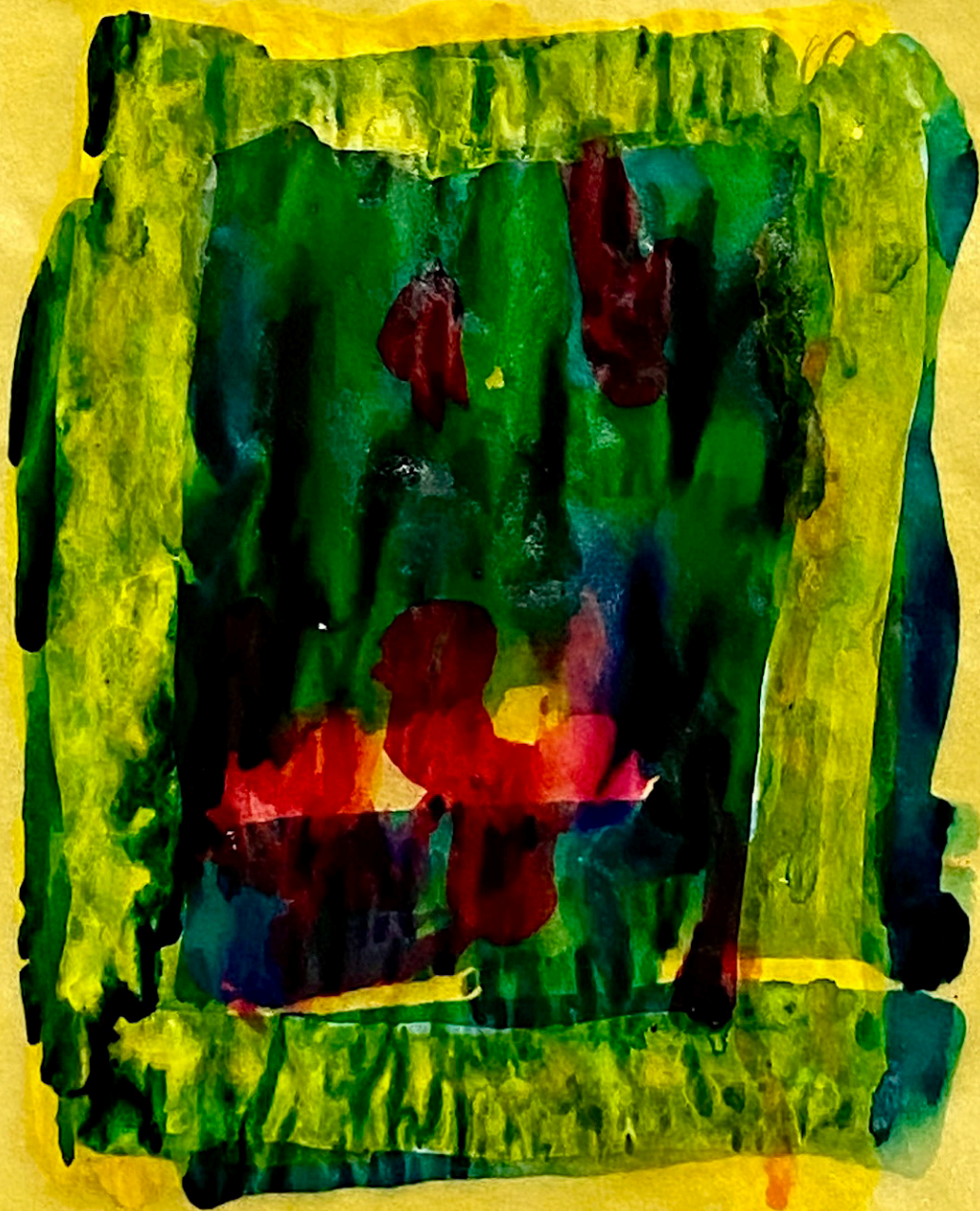








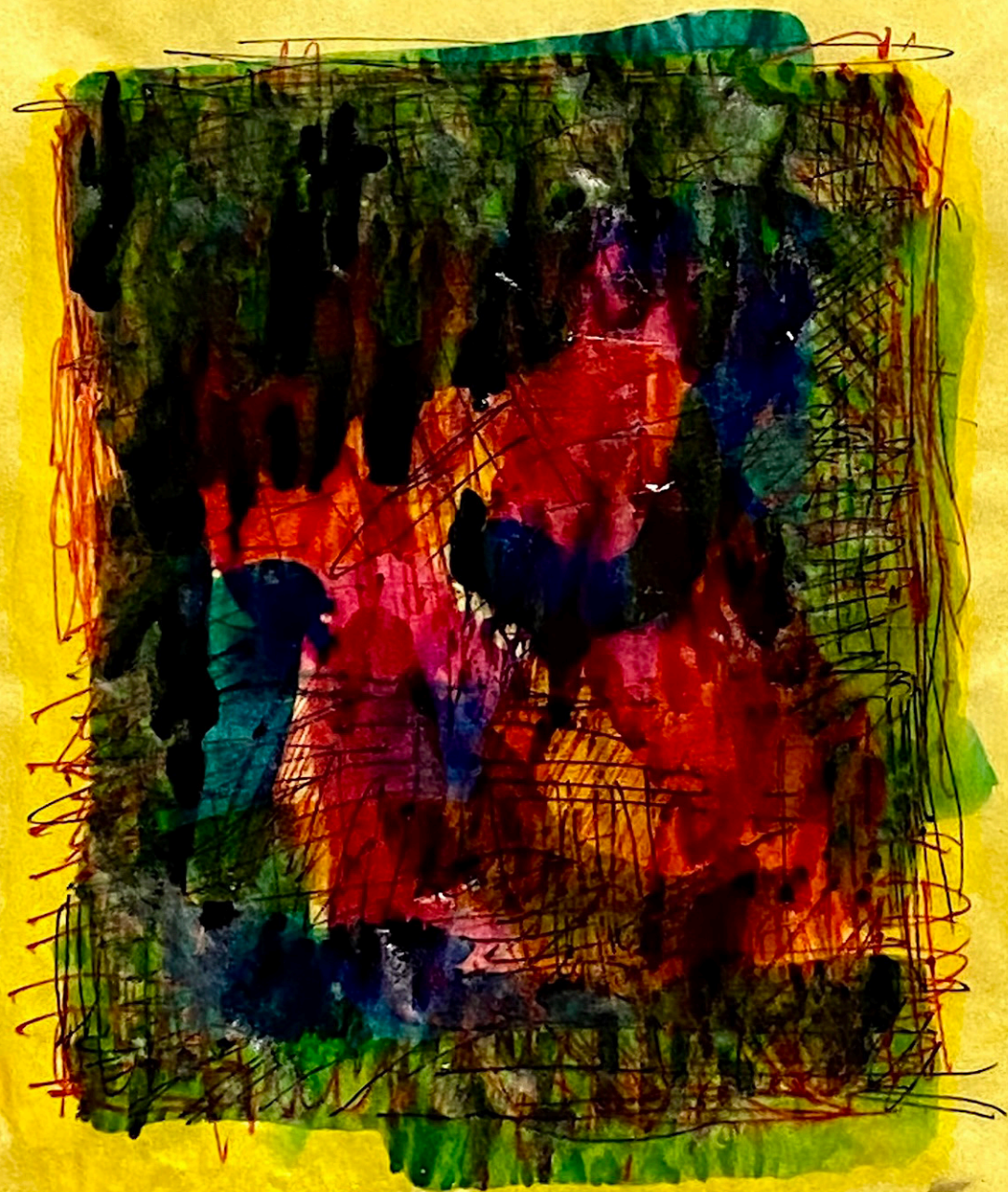




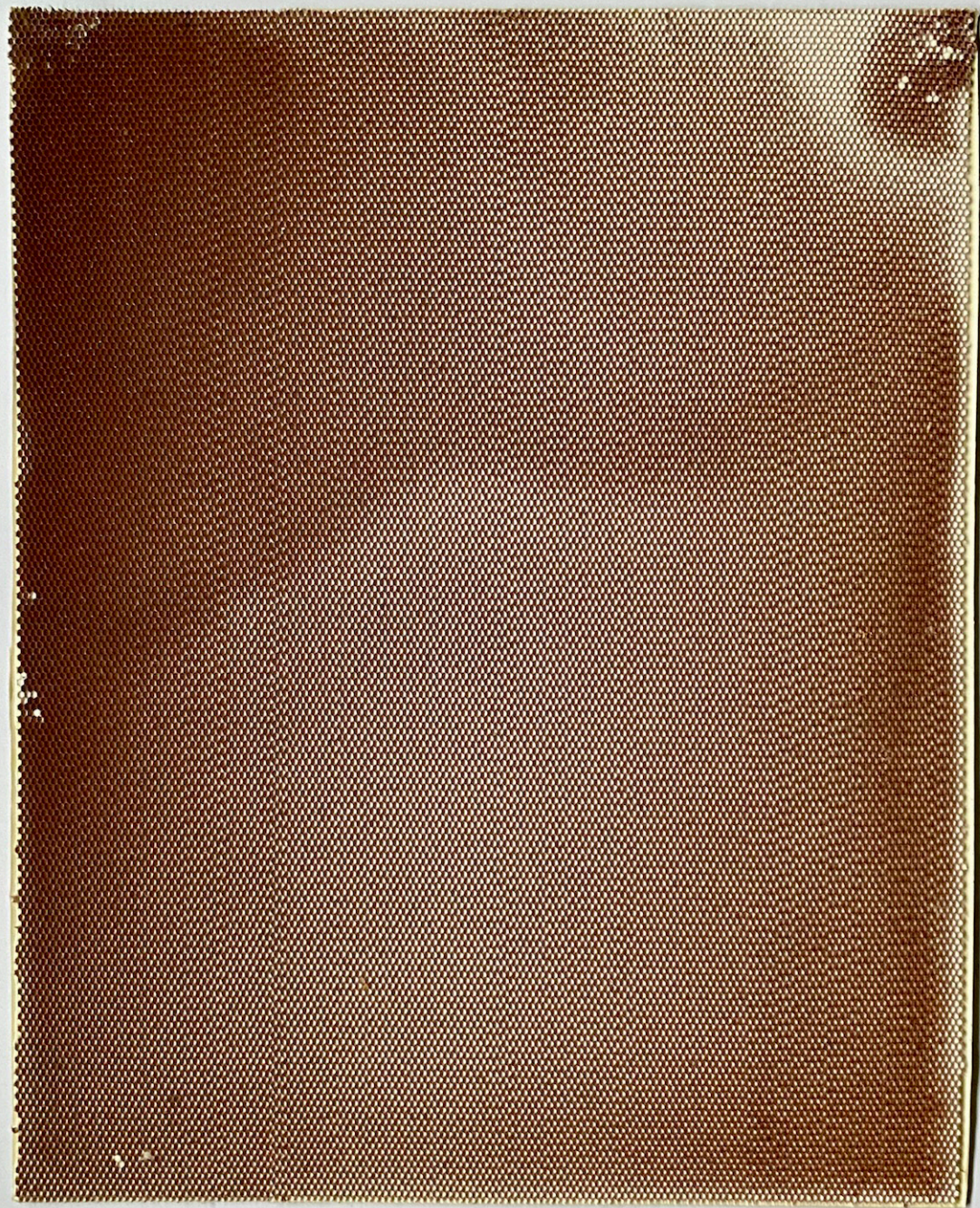














STUDY FOR

SMALL COUNTRY/

Scale is a thing, enormous or nano, words fall short. At some point the human dimension, urban or rural, must contend with the boundaries of aesthetics (how we sense the world) and territory (where we physically or psychologically dwell). It is said that “hedges make good neighbors,” I get it, believe in it, but it implies a common understanding of behavior across cultural experience. What if you could see forever – the boundaries so vast and indiscriminate to belong to any particular ideology or ethnographic group?

LARGE SCULPTURE

Two groups of visual inquiry:

SC/LC Color Studies pp 2, 6, 8  
Ink on paper  
approx 5"x4"

SC/LS Surface Studies pp 3, 4, 5, 7, 9  
Resin infused NOMEX panel  
22"x19"